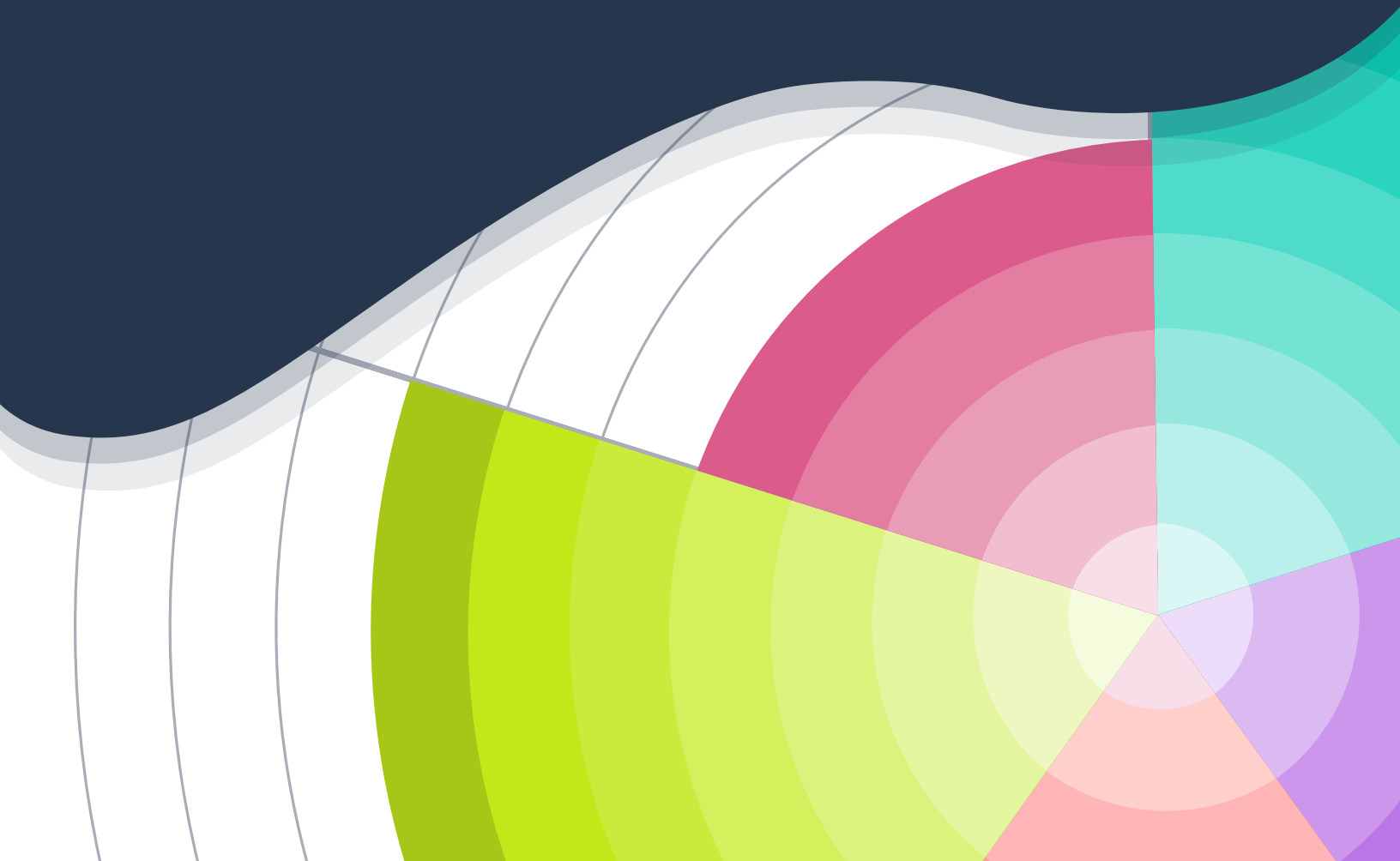




# The State of Educational Opportunity in Hawaii

A Survey of Hawaii Parents

October 2024



# The State of Educational Opportunity in Hawaii

A Survey of Hawaii Parents

## TABLE OF CONTENTS

Executive Letter	2
Methodology	3
How to Read the Results	5
Our State Summary	6
Hawaii in Context	8
About Us	19

Aloha,

Changing our world for the better starts by listening. By elevating the voices of parents across our state, we can ensure that we are focused on the problems most important to them and that the solutions we seek are grounded in their hopes and dreams for their children.

This parent focus is core to our mission at HawaiiKidsCAN, which is why we have launched programs such as the Lanai Empowered Ohana Network and Hawaii Tutoring+. Both programs are the result of direct parent feedback and surveys, and we are proud to put families in the driver's seat of our work.

To that end, we are excited to share with you a new survey on the state of educational opportunity in Hawaii. Produced in partnership with 50CAN and Edge Research, this survey provides not only a unique window into the opportunities available to students in our state right now, but also allows us to compare those answers to parents across our region and across the country.

The survey is organized into five categories of learning that families tell us are crucial for them and their children: 1) school quality and opportunity, 2) tutoring, summer and mental health, 3) out of school activities, 4) information and engagement, and 5) college and career readiness. A total of 334 parents and guardians of school-aged children in our state were surveyed between July 8 and August 22, 2024 as part of a nationwide research effort that reached more than 20,000 respondents.

### Here is what parents told us:



**Hawaii ranks near the top of the country in community learning opportunities such as tutoring and out of school programs.** The concept of Learn Everywhere has deep roots in our state. With one of the highest percentages of non-profit organizations in the country, it's no surprise the survey finds Hawaii as a leader in participation in tutoring, afterschool, organized sports, arts, dance and music.

**There are significant gaps by income for participation in these programs.** Despite Hawaii's leadership in community programs and summer learning, there are alarming participation gaps of up to 30 percentage points between low-income and mid-high income families. This speaks to a need for more resources to help families afford these powerful opportunities.



**Families are not satisfied with their schools.** In an alarming finding, Hawaii is ahead of only

New Mexico, Oregon and Nevada when it comes to school satisfaction. Given Hawaii's stagnant student achievement results, we know much work remains to reach the ambitious goals of the State of Hawaii's Public Education 2023-2029 Strategic Plan.



**Families are anxious about higher education and career opportunities.** HawaiiKidsCAN has focused relentlessly on expanding quality pathways to higher education and careers, as the growing affordability crisis has highlighted the small margin of error young adults have to find economic stability in Hawaii. Not only is Hawaii near the bottom of states in confidence related to these areas, but we have the extremely rare circumstance of middle- and high-income families having less confidence than low-income families. Based on our work since 2017, we believe these findings speak to ongoing challenges students have accessing high-wage, high-growth jobs in fields such as computer science and data science, as well as uncertainty over the academic preparation of students to attend a college that delivers strong return on investment.

Over the following pages, you'll find:

- The **methodology** of the survey and an explanation of how the results are presented.
- A two-page summary of the **results** for Hawaii across the five categories and 15 questions.
- **Visualizations** of how Hawaii compares to the rest of the nation on important questions.

A digital copy of this report is available at [hawaiikidscan.org](http://hawaiikidscan.org). Visit our partners at [50can.org](http://50can.org) to view the nationwide report and access the full data set.

Sincerely,



**David Sun-Miyashiro**  
Executive Director  
HawaiiKidsCAN

# Methodology

Edge Research conducted a nationwide survey of 20,090 U.S. parents and guardians of school-aged children (K-12th grade) in each of the 50 states plus the District of Columbia. **In Hawaii, 334 parents and guardians of K-12 children were surveyed.** Respondents could take the survey in either English or Spanish, based on their preference. The survey was in the field from July 8 to August 22, 2024.

## DATA COLLECTION

The survey used a mixed-mode methodology to reach as many households as possible. First, survey respondents were recruited using online, non-probability samples obtained via national opt-in consumer research panels. These surveys were mobile-optimized (meaning participants can take the survey on a PC or mobile device, which helps reach those who do not have internet access but do have a mobile data plan). In states where Edge Research was not able to collect at least 300 surveys using this method, they obtained supplementary text-to-web interviews.

## SURVEY REPRESENTATIVENESS

As respondents entered the survey, they submitted demographic information, and quotas were set to ensure the sample is proportionately distributed in accordance with the most recent U.S. Census<sup>1</sup> and National Center for Education Statistics (NCES)<sup>2</sup> data on U.S. parents in each state. Quotas functioned by predetermining the number of desired respondents by gender identity, race, ethnicity, child’s grade and grade level in each state. Once the desired number was reached with each quota group, it closed, and additional respondents were turned away. After the survey came out of the field, Edge Research reviewed the data and applied additional weights by income, race/ethnicity, school level, and school type within states.

The following tables provide the demographics of survey respondents in Hawaii after weighting.

RACE/ETHNICITY							
Hispanic/Latino of Any Race	White Alone	Black/African American Alone	Asian Alone	American Indian or Alaska Native Alone	Native Hawaiian or Pacific Islander Alone	Some Other Race Alone	Two or More Races
11%	20%	2%	37%	0.1%	10%	0.1%	19%

INCOME DISTRIBUTION		
Low Income	Middle Income	High Income
28%	60%	12%

<sup>1</sup> Annual Social and Economic Supplements, United States Census, [Annual Social and Economic Supplements \(census.gov\)](https://www.census.gov/data/tables/2019/annsocsupp/)

<sup>2</sup> Education Demographic and Geographic Estimates, National Center for Education Statistics (NCES), [Index \(ed.gov\)](https://nces.ed.gov/ipeds/data/)

## SCHOOL LEVEL

K-5th	6th-8th	9th-12th
45%	24%	31%

## GRADE OF CHILD

K	1st Grade	2nd Grade	3rd Grade	4th Grade	5th Grade	6th Grade	7th Grade	8th Grade	9th Grade	10th Grade	11th Grade	12th Grade
7%	7%	7%	8%	8%	8%	8%	8%	8%	8%	6%	7%	10%

## SCHOOL TYPE

Local or Traditional Public School	Public Magnet School	Public Charter School	Private Independent School	Parochial/Religious School	Virtual/Online Public School	Homeschool	Microschool	Other Type of School
62%	3%	7%	18%	5%	2%	2%	1%	0.5%

## INCOME DEFINITIONS

In the pages that follow, we provide results for low, middle and high-income parents. These income buckets were calculated using the Pew Research Center’s study “The State of the American Middle Class”<sup>3</sup> and their category definitions:

- Middle-income households are defined as those with an income that is two-thirds to double that of the U.S. median household income, after being adjusted for household size.
- Lower-income households have incomes less than two-thirds of the median.
- High-income households have incomes that are more than double the median.

Following these definitions, Edge Research adjusted the incomes reported in the survey to reflect a 3-person household using the equivalence scales technique. Pulling from the U.S. Census 2023 Annual Social and Economic Supplements, they used the 3-person household income breaks of \$61,000 to \$183,000 as middle, and values above and below those thresholds as lower and upper income respectively.

## DATA QUALITY CONTROL AND STANDARDS

Edge Research employed several practices to ensure data quality. The survey platform used reCAPTCHA to screen for bots. They also applied a third-party tool called Research Defender to screen out known bad actors and respondents with high survey-taking rates. In addition, data was monitored regularly while in the field. Once all responses were collected, they applied additional data cleaning processes, clearing data for cheating, speeding, inattentiveness, and AI-generated responses.

Edge Research follows the American Association for Public Opinion Research (AAPOR) Code of Professional Ethics and Practices<sup>4</sup> to maintain the highest standards of competence, integrity, accountability, and transparency in public opinion and survey research work.

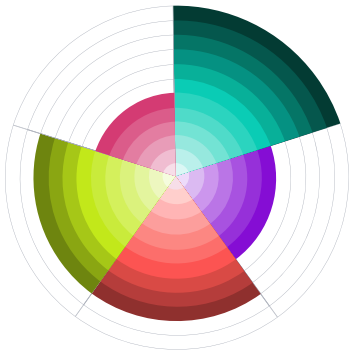
<sup>3</sup> Kochhar, Rakesh, “The State of the American Middle Class,” [Pew Research Center](#), 5/31/24

<sup>4</sup> Code of Professional Ethics and Practices, [American Association For Public Opinion Research \(AAPOR\)](#)

# How to Read the Results

One challenge with a survey of this size was how to present the results in an accessible way that doesn't sacrifice the depth of insights. We decided to present the answers in two ways: first with an overview of the results across 15 questions for our state and then with a more in-depth look at how our state compared to all the other states for a few key questions.

## OUR STATE SUMMARY



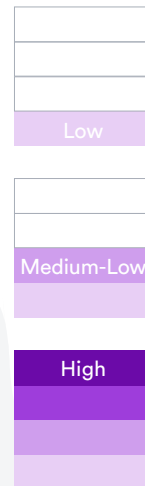
To help make it easier to look at our state's full results at a glance, we present the answers from our parents over two pages. At the top of the first page is the number of parents who participated in the survey.

We also provide a way to view our state's **relative strengths and weaknesses through a circle with five wedges**, one for each of the five categories of the survey: 1) School quality and opportunity (**pink**), 2) Tutoring, summer, and mental health (**green**), 3) Out of school activities (**teal**), 4) Information and engagement (**purple**), and 5) College and career readiness (**orange**).

Each of the five categories is made up of three questions. These are presented below each category with **our state's results compared to other states represented by a tier** shown to the right of each question, from low to high. These tiers are scored from 1 (low) to 4 (high) and the scores across the three questions determine how many rows are colored in for the wedge (up to a possible number of 12 rows).

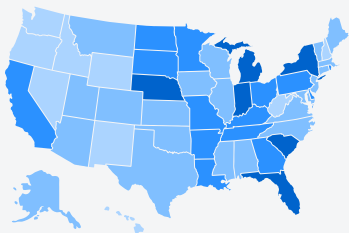
The state results for each question are presented in four circles: low-income, middle and high income, state average and national average. For yes/no questions, the results are presented as the percentage who said yes, rounded to the nearest whole number. For questions about parents' opinions and attitudes, we utilized a Likert scale and **reported out the percentage choosing the highest option**. For example, on question 1, which measures parents' satisfaction with their child's school, we present the percentage who answered that they were "very satisfied." This helps ground the comparison discussion in a high bar for success.

State Tier



## OUR STATE IN CONTEXT

The second section of this report provides the results **for all 50 states plus D.C.**, one question at a time.



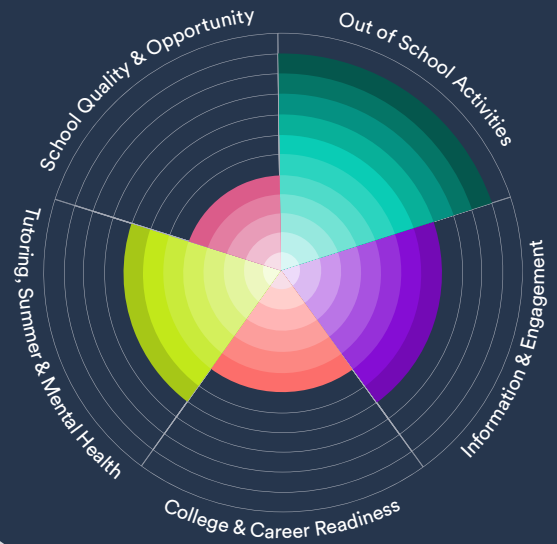
For the **list**, states are ordered from highest performing states at the top to lowest performing states at the bottom. This list shows the state average as a dark blue dot and the results for low-income families in a light shade of the section color and the results for middle- and high-income families as a darker shade of that color. Our state is identified with a red box to make it easier to spot.

# HAWAII



Surveyed July 8-August 22, 2024

Sample size (N) = 334 parents and guardians



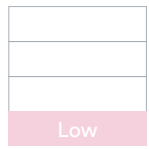
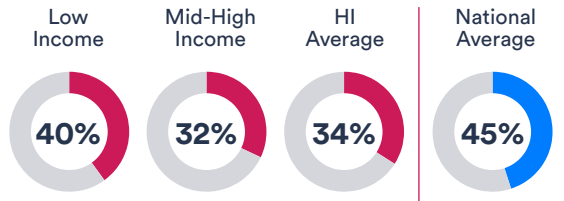
## SCHOOL QUALITY AND OPPORTUNITY

State Tier



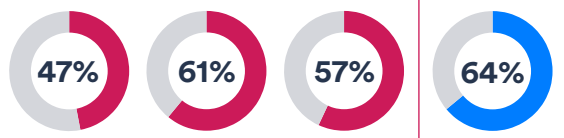
### School Satisfaction

Percentage answering they are very satisfied with their child's school



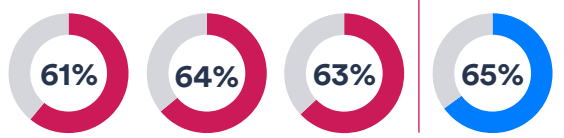
### Would Make the Same Choice

Percentage answering that they would send their child to the school they go to today



### Feel They Have a Choice

Percentage answering they feel like they have a choice in what school their child attends



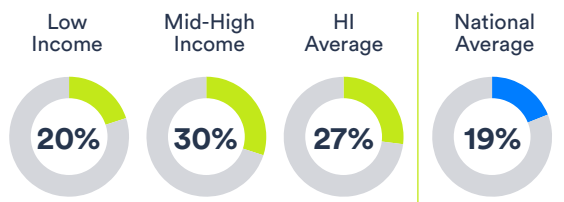
## TUTORING, SUMMER AND MENTAL HEALTH

State Tier



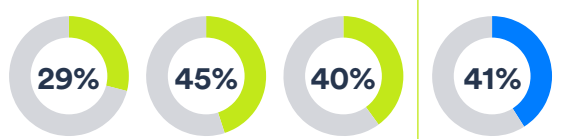
### Tutoring Participation

Percentage of children who have received academic tutoring in this past school year



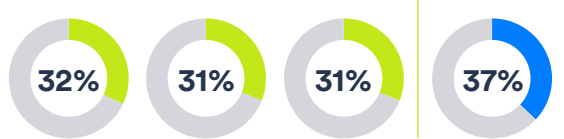
### Summer Program Participation

Percentage of children who participated in a supervised summer program

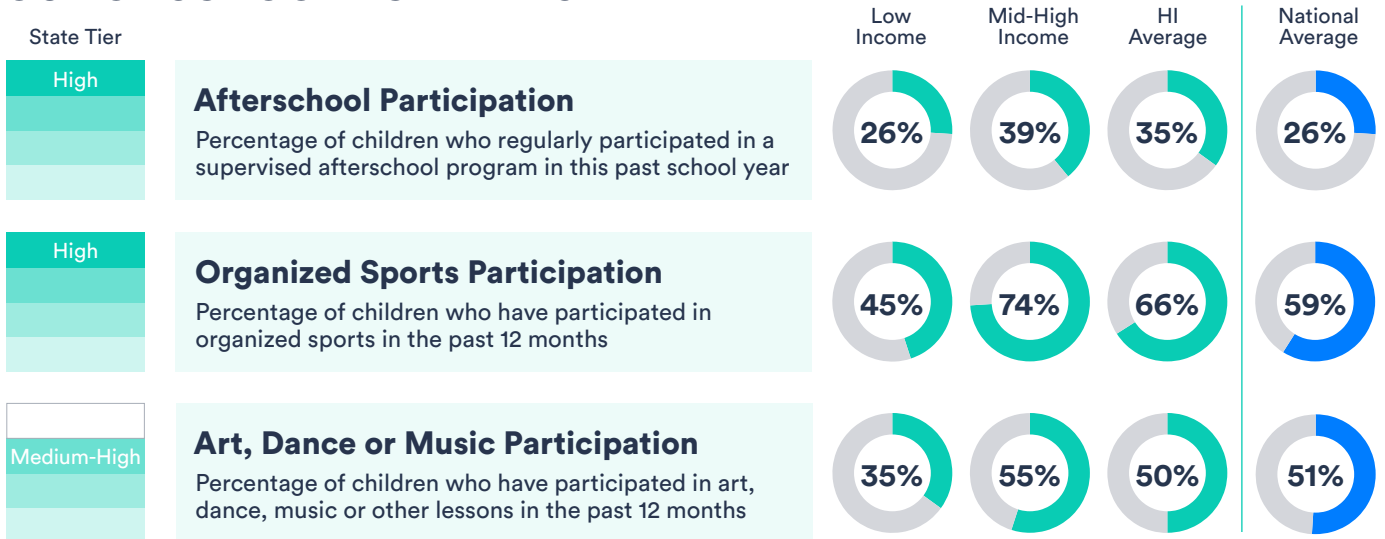


### Mental Health Satisfaction

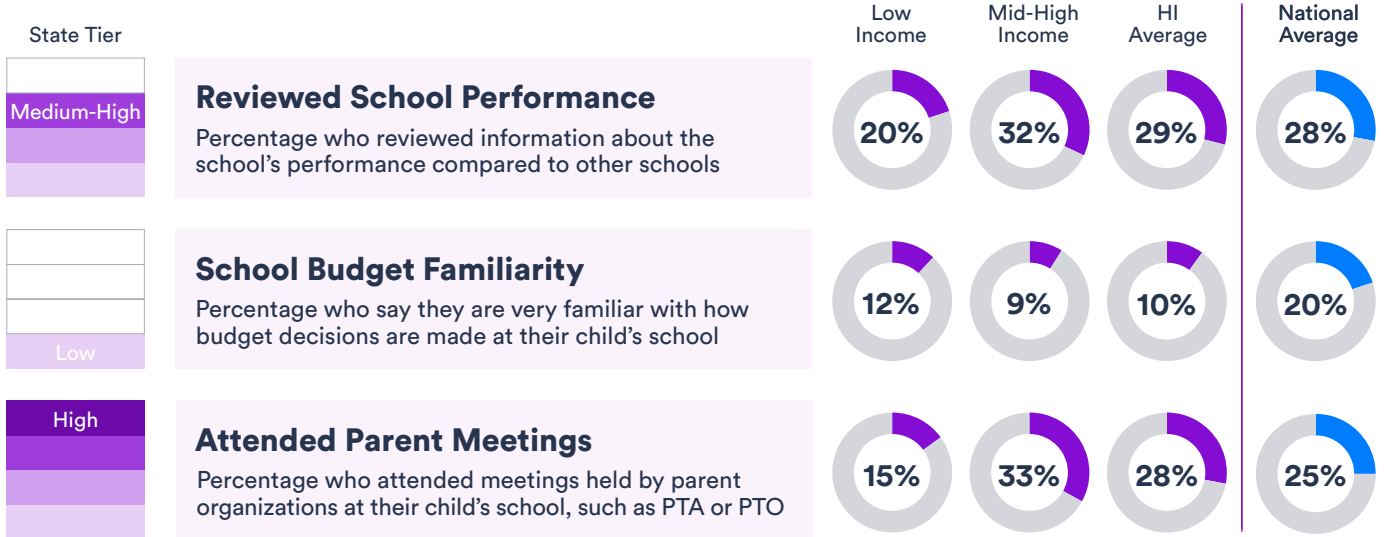
Percentage answering they are very satisfied with how the school supports their child's mental health needs



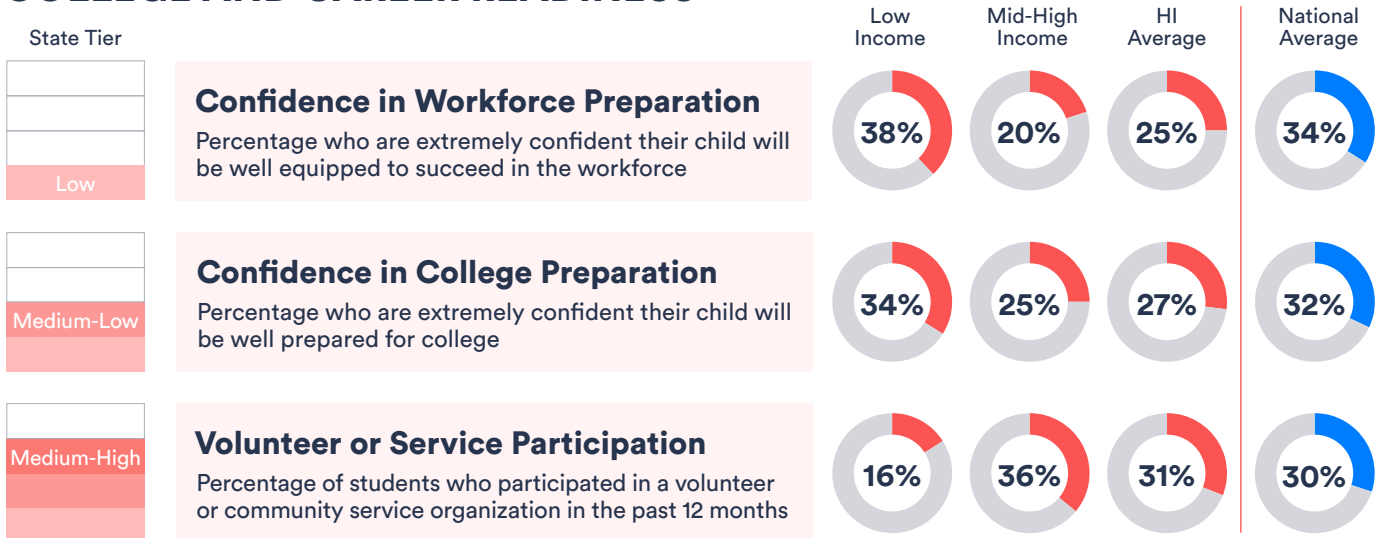
## OUT OF SCHOOL ACTIVITIES



## INFORMATION AND ENGAGEMENT



## COLLEGE AND CAREER READINESS

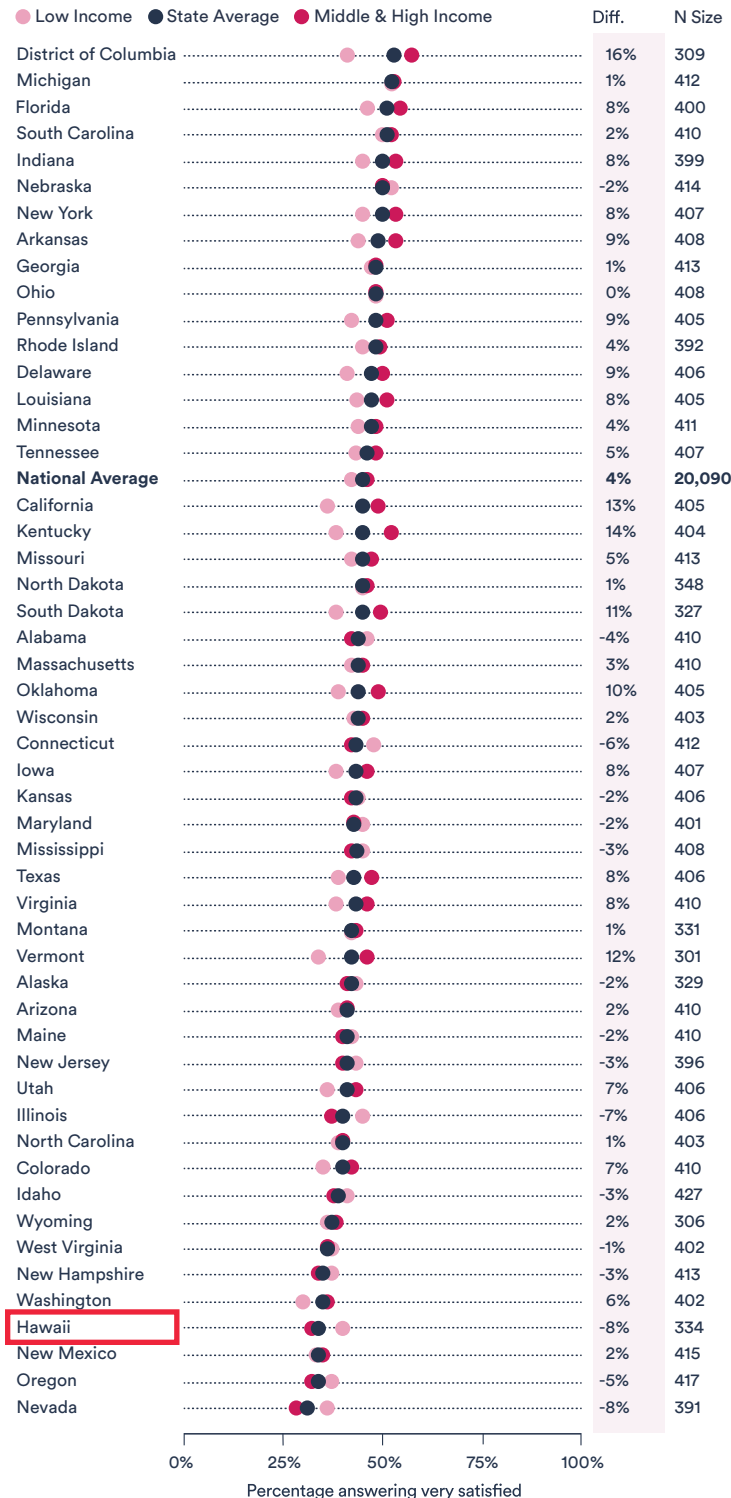




# Hawaii in Context: A 50-State Perspective

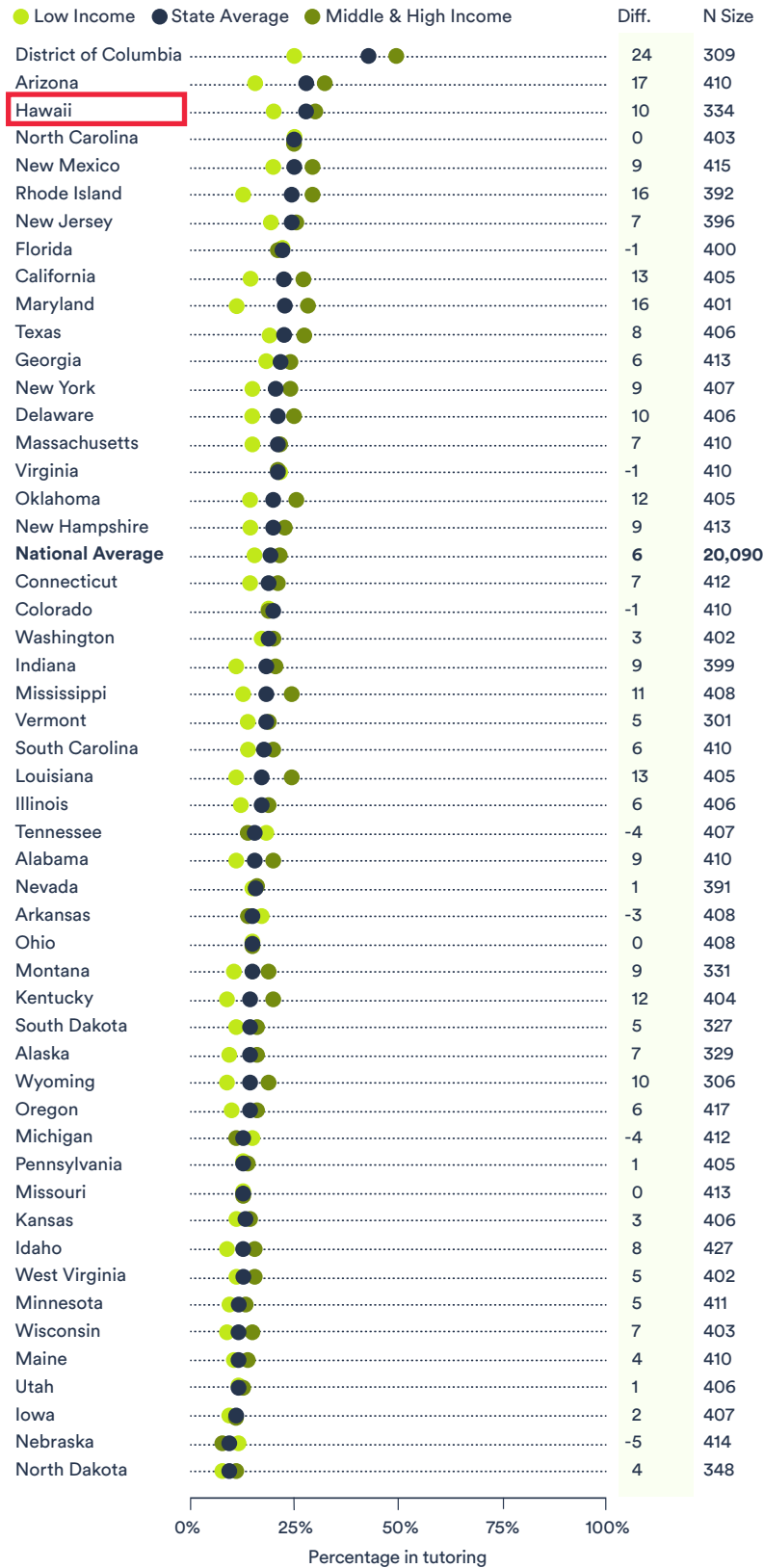
## SCHOOL SATISFACTION BY STATE & INCOME

Percentage answering they are very satisfied with their child's school



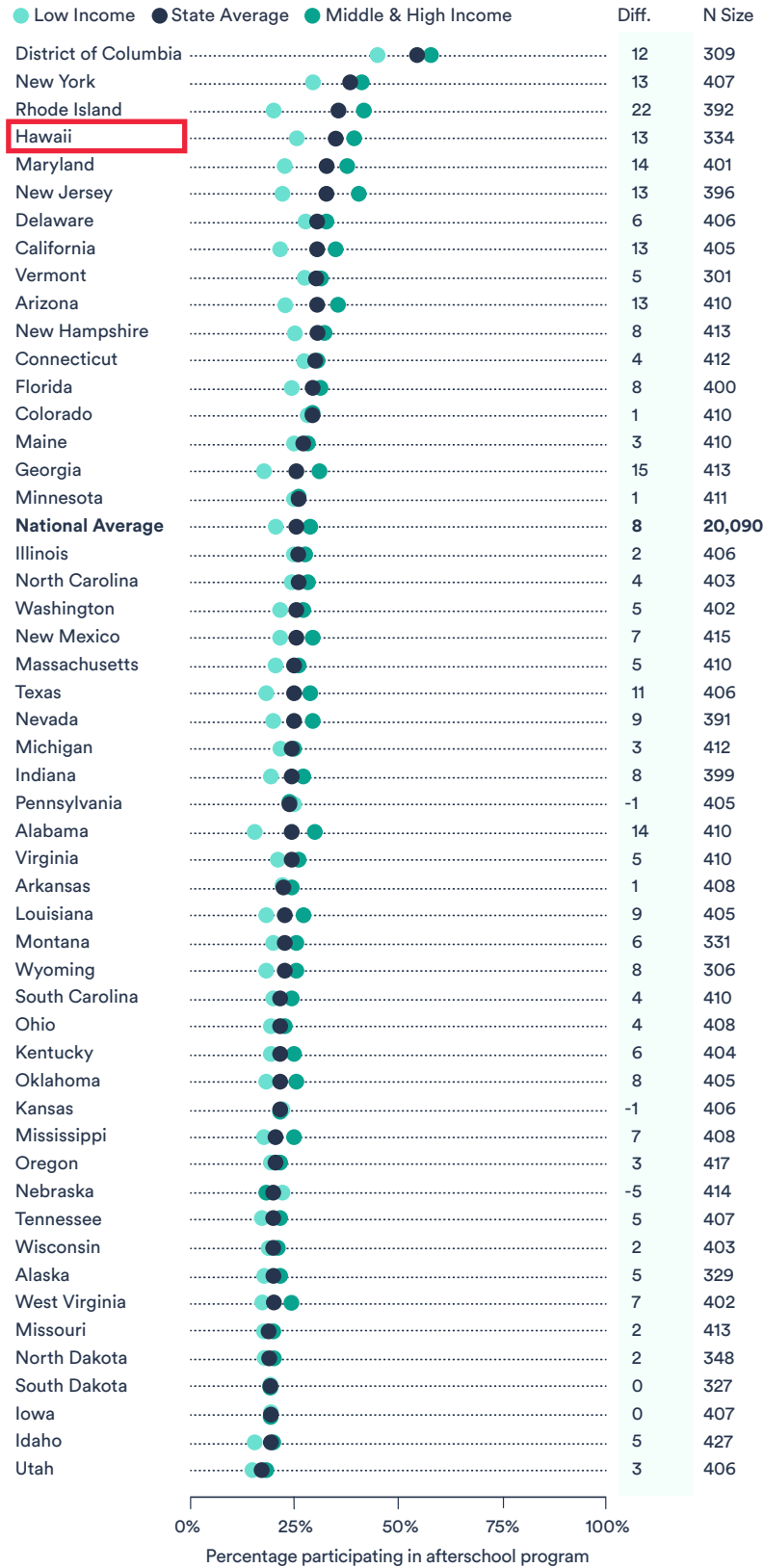
# PARTICIPATION IN TUTORING BY STATE & INCOME

Percentage of children who have received academic tutoring in this past school year



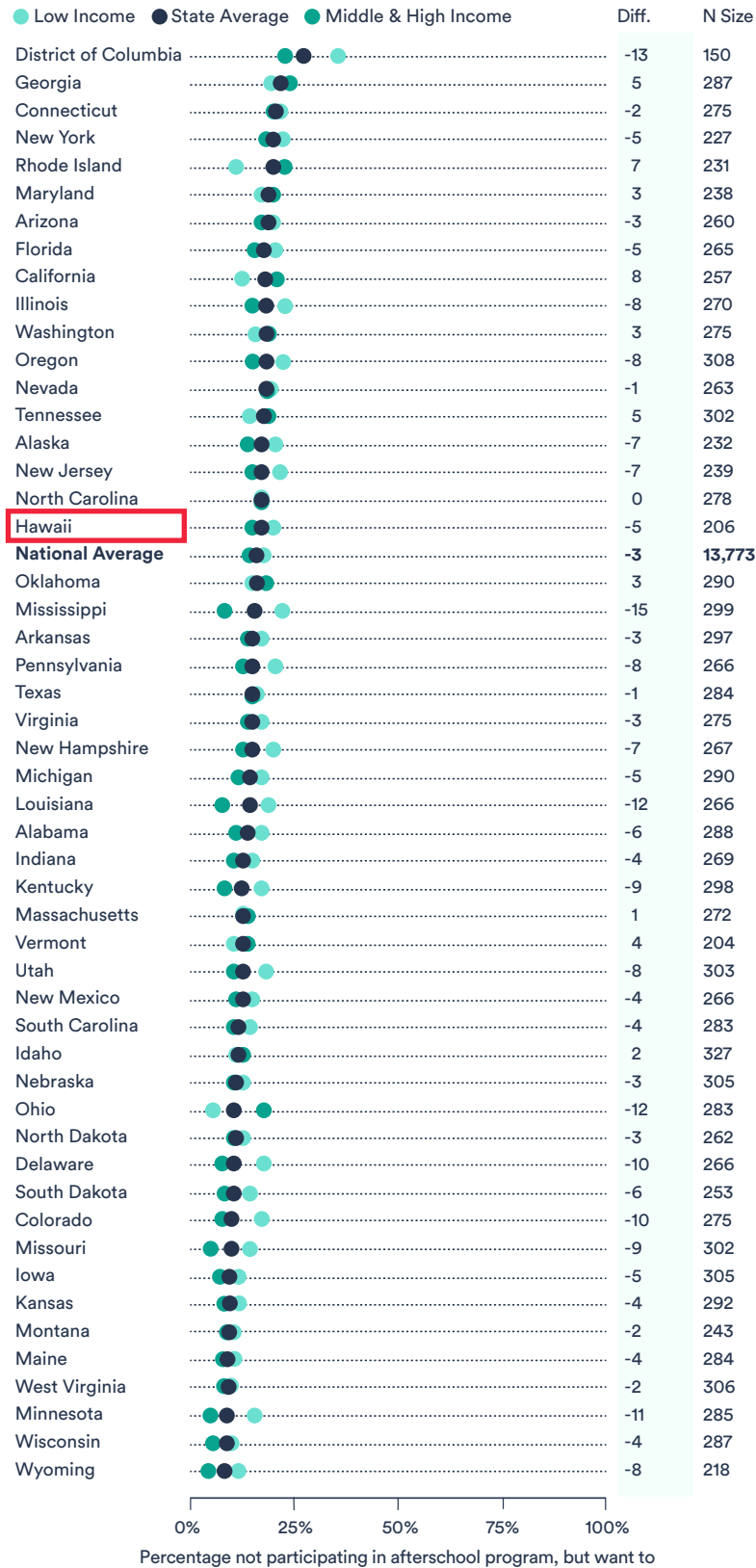
# AFTERSCHOOL PARTICIPATION BY STATE & INCOME

Percentage of children who regularly participated in a supervised afterschool program in this past school year



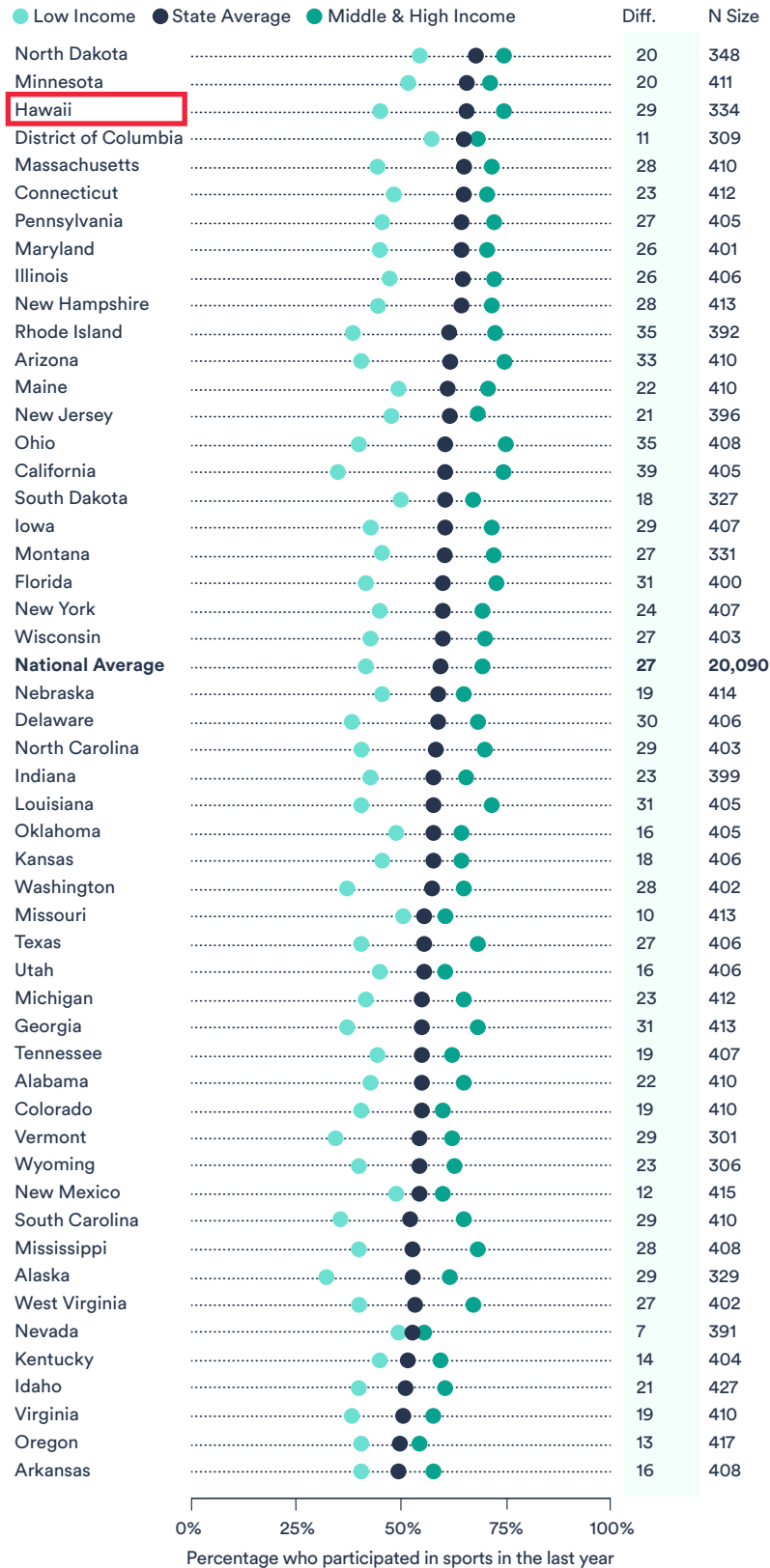
# AFTERSCHOOL UNMET DEMAND BY STATE & INCOME

Percentage of families whose child did not participate in an afterschool program but are very interested in doing so



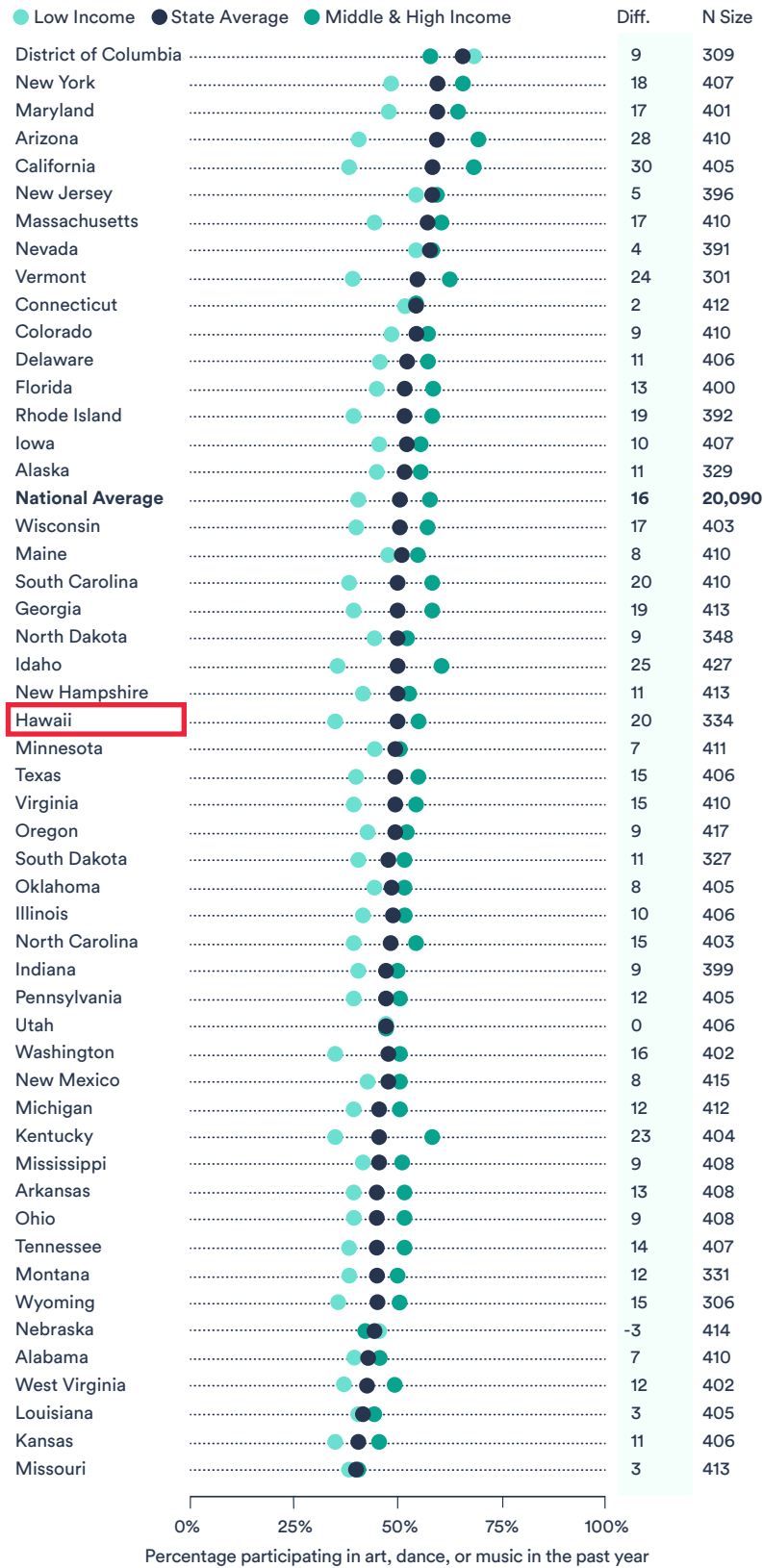
# ORGANIZED SPORTS PARTICIPATION BY STATE & INCOME

Percentage of children who have participated in organized sports in the past 12 months



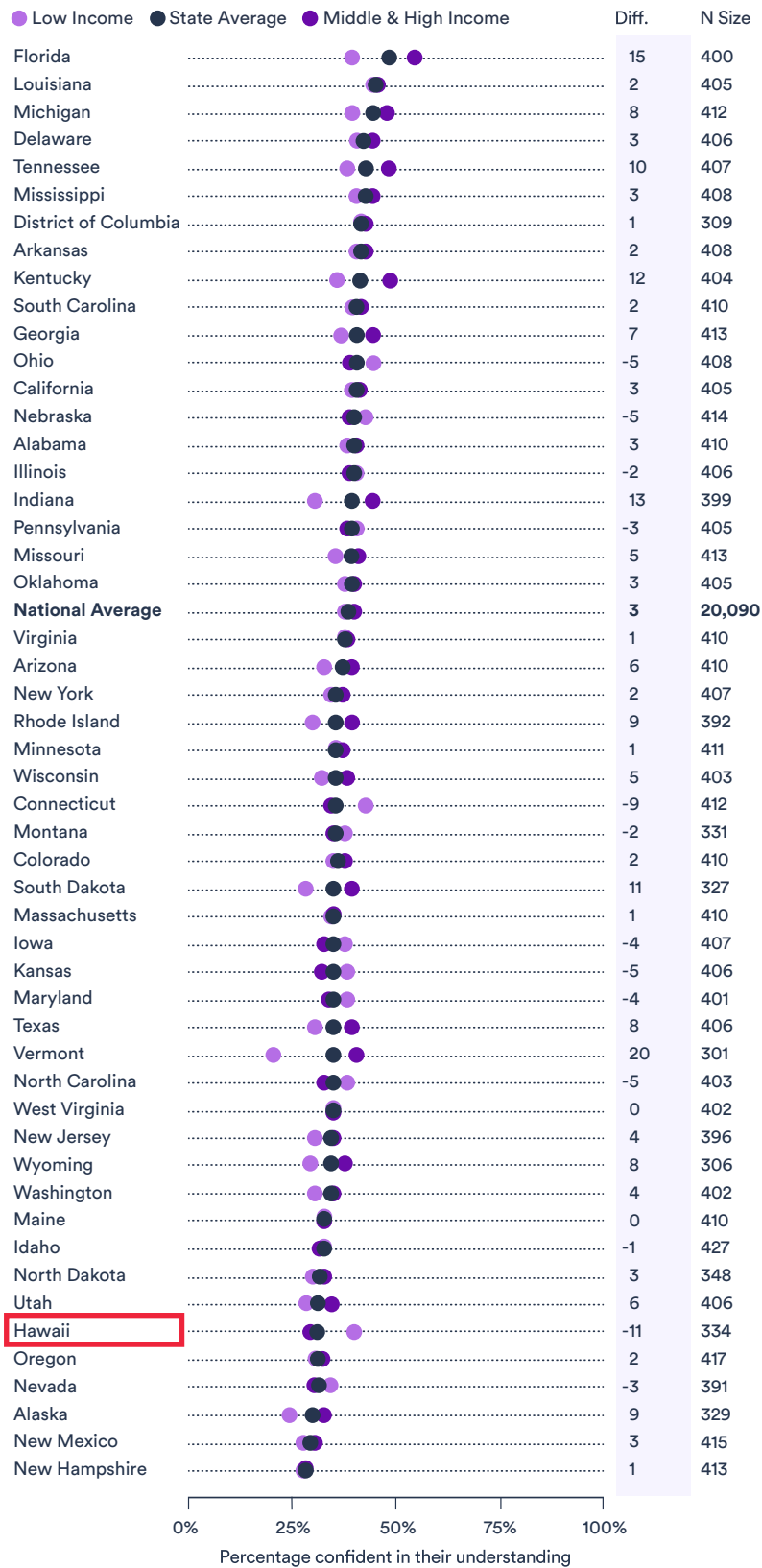
# ART, DANCE OR MUSIC PARTICIPATION BY STATE & INCOME

Percentage of children who have participated in art, dance, music or other lessons in the past 12 months



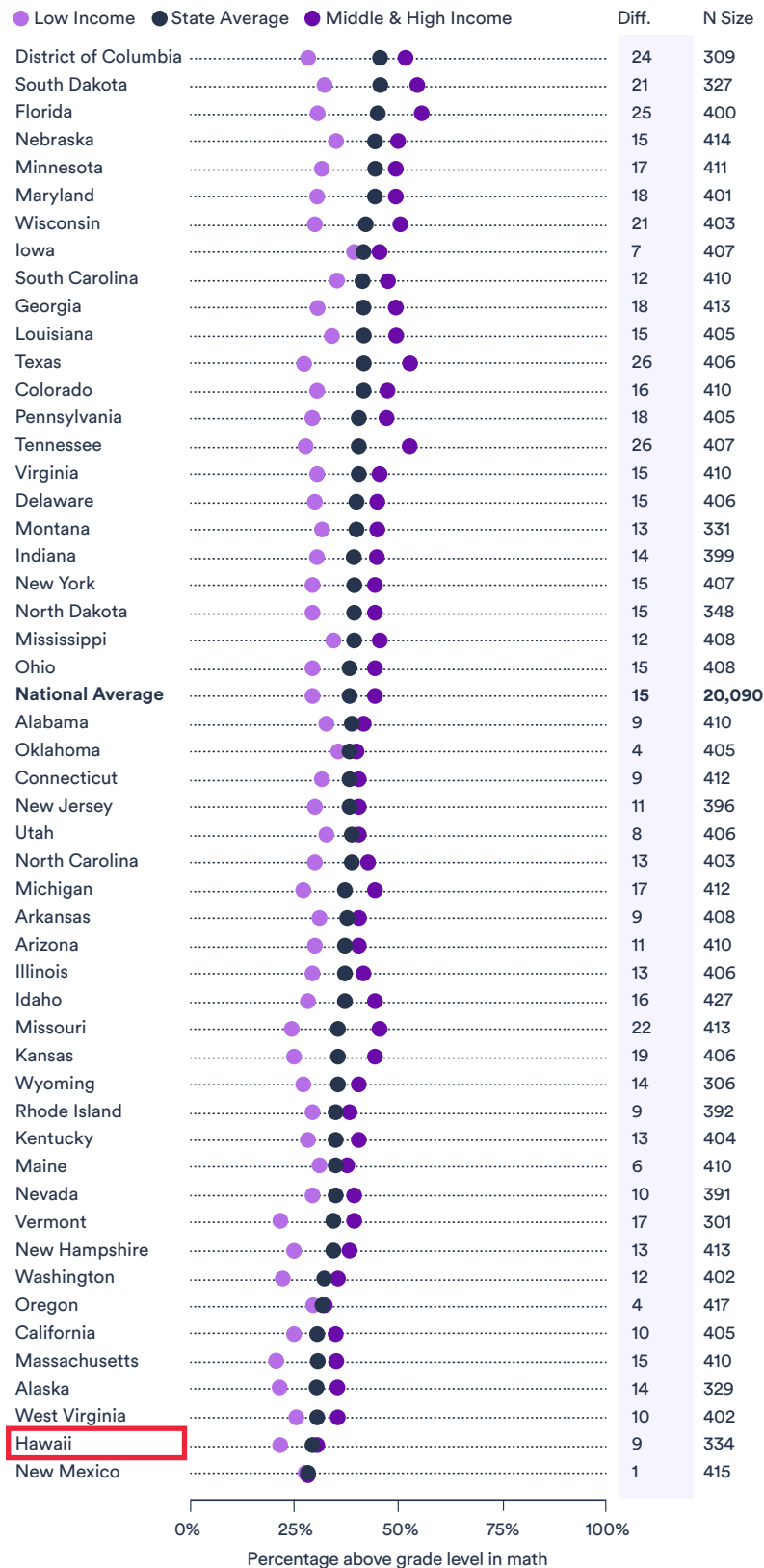
# CONFIDENCE IN UNDERSTANDING BY STATE & INCOME

Percentage who are extremely confident they have a clear understanding of how well their child is achieving academically



# ABOVE GRADE LEVEL IN MATH BY STATE & INCOME

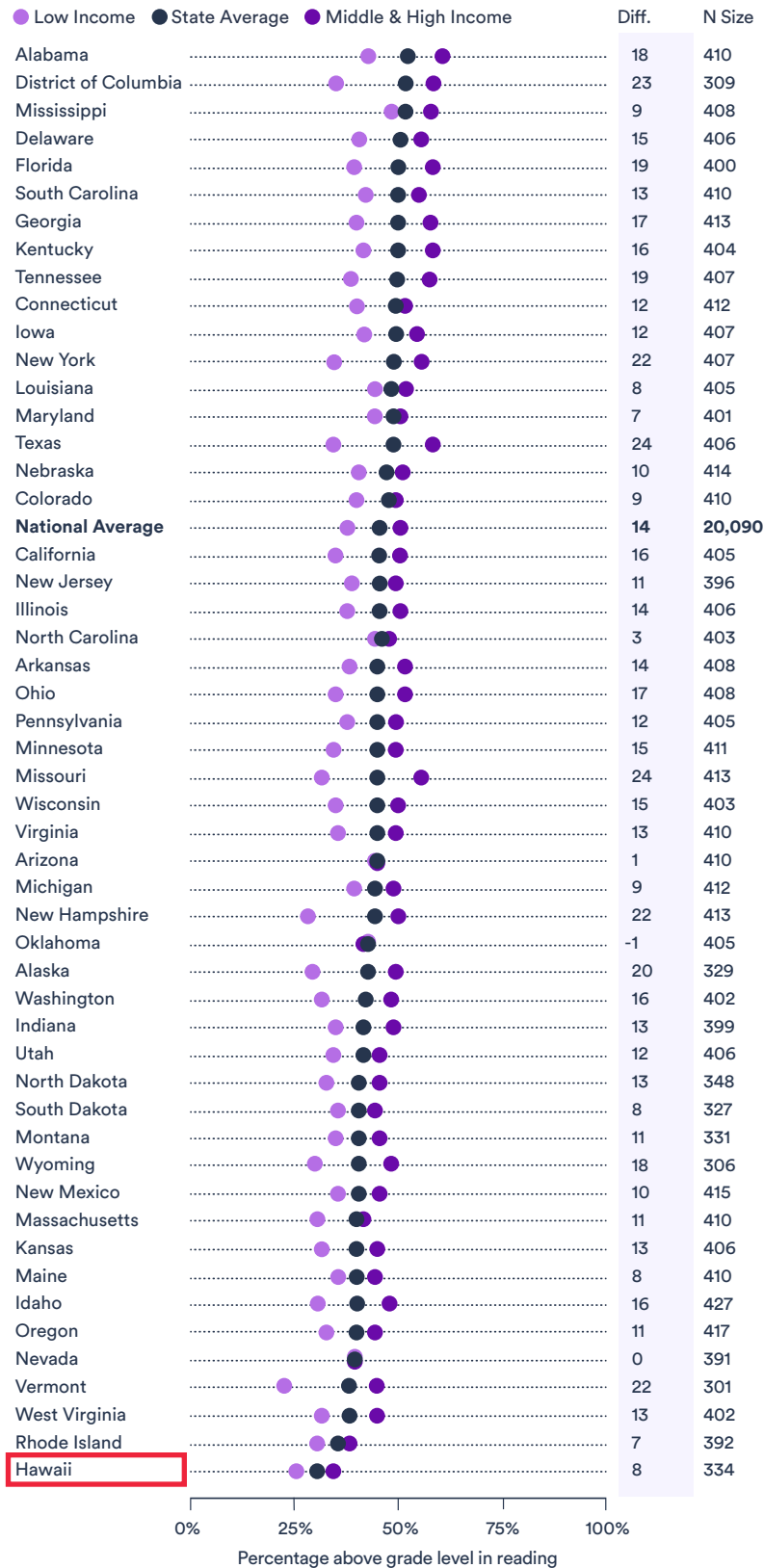
Percentage who believe their child is performing above grade level in math





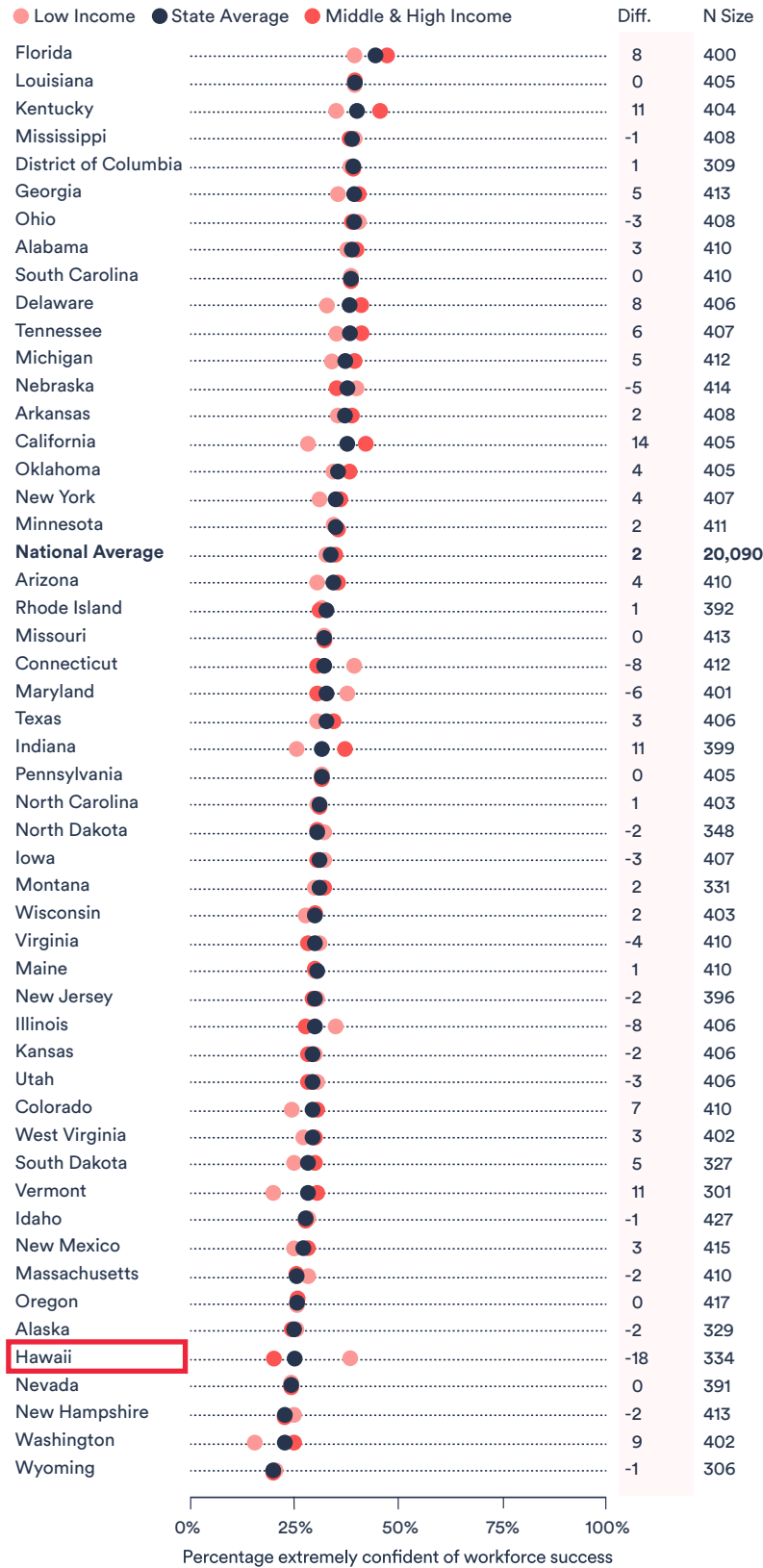
# ABOVE GRADE LEVEL IN READING BY STATE & INCOME

Percentage who believe their child is performing above grade level in reading



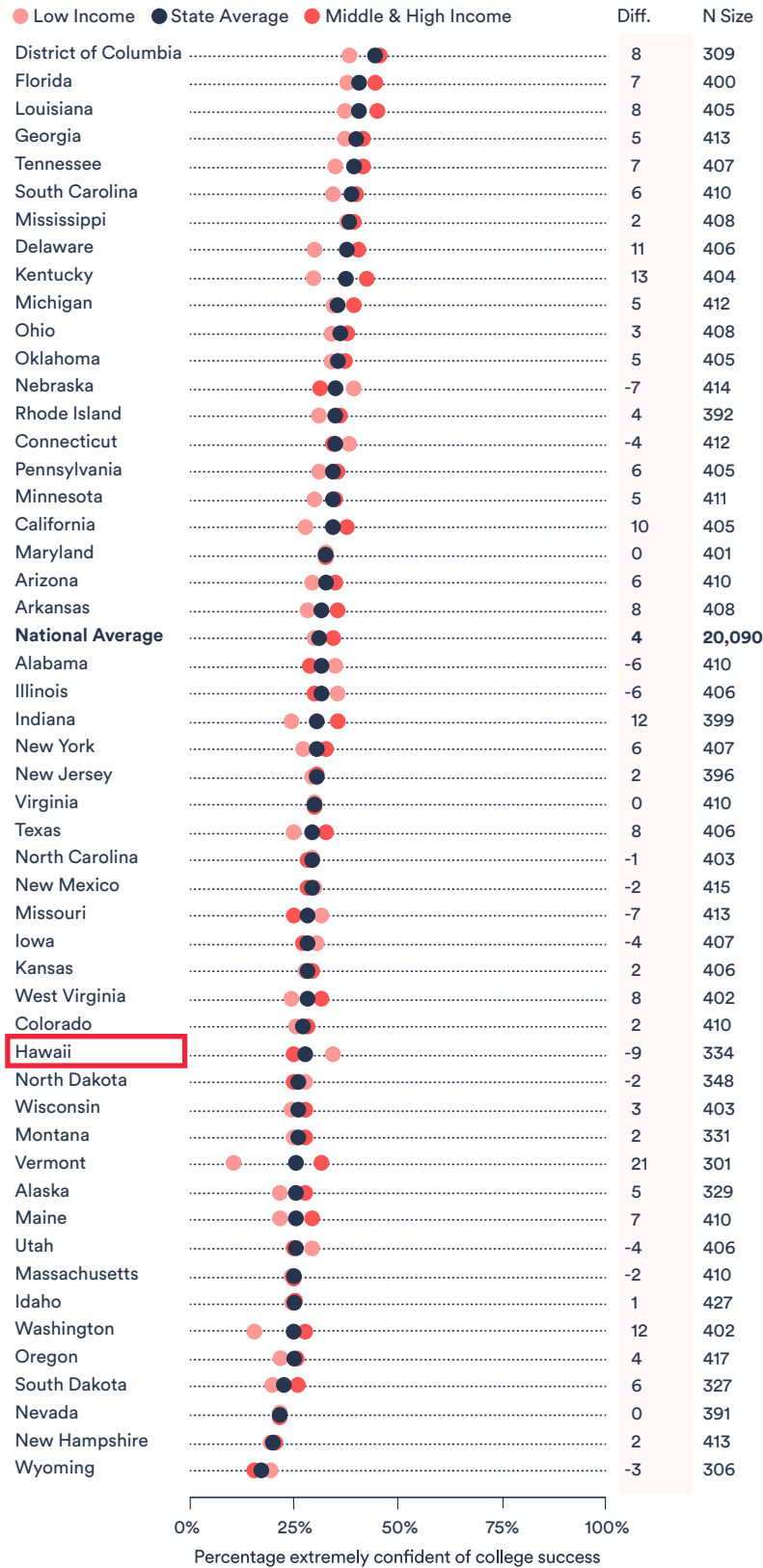
# CONFIDENCE IN WORKFORCE PREPARATION BY STATE & INCOME

Percentage who are extremely confident their child will be equipped with the knowledge, skills and competencies to succeed in the workforce



# CONFIDENCE IN COLLEGE PREPARATION BY STATE & INCOME

Percentage who are extremely confident their child will be equipped with the knowledge, skills and competencies to succeed in the workforce



## ABOUT HAWAIIKIDSCAN

Founded in 2017, **HawaiiKidsCAN** is committed to ensuring that Hawaii has an excellent and equitable education system that reflects the true voices of our communities and, in turn, has a transformational impact on our children and our state. By empowering communities and elevating their voices, we work to build an equitable education system for our keiki, ensuring every Hawaii student has access to a high-quality education that prepares them for a life of success and global and local leadership.

## ABOUT 50CAN

**50CAN** is an education advocacy organization focused on building the dynamic, student-centered education system of the future so that all kids, regardless of address, receive a high quality education. At the center of this work is our support for local education advocates who together have secured more than 250 transformative policy wins since our founding in 2011. This advocacy work is complemented by fellowships to spark and amplify the voices of changemakers, support for educational entrepreneurs as they build proof points of a better tomorrow, and efforts to help elected leaders better serve the public through a deeper understanding of education policy.

## ABOUT EDGE RESEARCH

**Edge Research** tells data-driven stories that make our clients' programs, products, and brands successful. One of Edge's key verticals is education, which ranges from early childhood development, to K-12 and postsecondary education, to lifelong learning. We work for dozens of foundations, advocacy organizations, curriculum providers, associations, districts, schools and universities. Edge is constantly in the field talking to parents, students, teachers, administrators, and other education decision makers – getting the pulse on the issues that matter most.

